

Customer :

customer

Customer part :

customer part

Comment :

Comment

S1=8.02

S2=5.26

Tmax=312

Tp S2=351.0

PI=0.6

HI=395

Sample =755.95

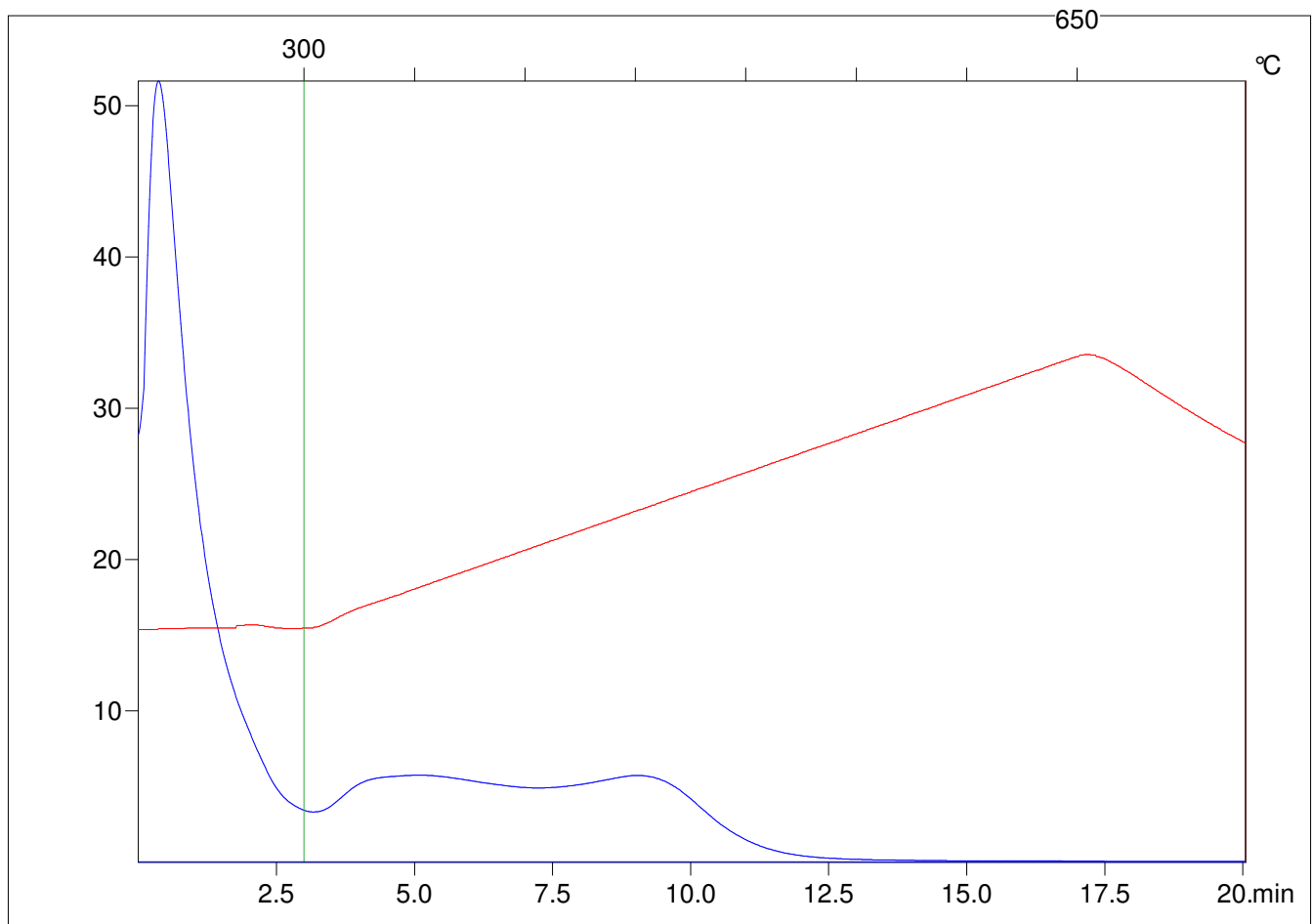
Method =Bulk Rock

Cycle=Basic

KFID(10\*9)=1550

Qty =70.4

TOC=1.33



C:\VINC\PK130315\PK010.R00 : FID pyrolysis graphic

State

Pyro Status

Oxi Status